

# UNI EN 1116:2018 Coordinating sizes for kitchen furniture and kitchen appliances

Andrea Giavon

Since when the concept of “modular kitchen” was introduced, this important space has been filled with a fundamental union between the “furniture” aspect, with very important aesthetic contents and the “homehold appliance” appearance from the known useful contents in the carrying out typical kitchen activities.

This important link between two worlds (furniture and homehold appliances) has played an indispensable role in the activities of people who are assimilable for work. And this fundamental importance has been maintained over time despite the fact that the sociological models of the family have changed radically from the 60s to today. Even today, despite the use almost exclusively in the three meals, the kitchen remains an area in which the attention to its particularity and complexity has always been high and continues to be an “object” under close observation by the technical standardization.

It is therefore easy to understand how important it was, to find a technical agreement and to define it in a standard, between the furniture and the home appliances world.

The appliance must be able to fit into the furniture and the furniture must be able to accommodate it. Simple reasoning but involved in a complex confrontation two very different industrial worlds in size and approach.

The first version of the standard we will discuss in this article is from 1995 and the current version is now the third revision, demonstrating the industrial and historical process that has affected this topic and this product.

Let's now examine the contents of this standard, trying to shed light on the points that make it an important document for the kitchen furniture industry.



## THE STANDARD EN 1116

The standard defines and specifies the coordination dimensions for the kitchen furniture, worktops, (and recessed panels, mobile fronts and decorative panels) as well as for kitchen appliances, and further elements such as washbasins.

The aim is achieved by defining the dimensions for height, width, depth and space to integrate appliances in kitchen furniture.

It is also understandable and easily understood that this standard does not apply to kitchens used in catering services. These in fact use appliances and specially designed and planned and generally do not include furnishing.

In reading the standard we meet a point that I consider extremely interesting regarding the terms and the related definitions. These, besides being functional to the standard, also provide a useful vocabulary, which even if duly translated into our language, allows a uniformity of language today more than ever necessary.

The heights foreseen for the fixed height worktop are the following:

850<sub>0</sub><sup>+50</sup> mm

900<sub>0</sub><sup>+50</sup> mm

950<sub>0</sub><sup>+50</sup> mm

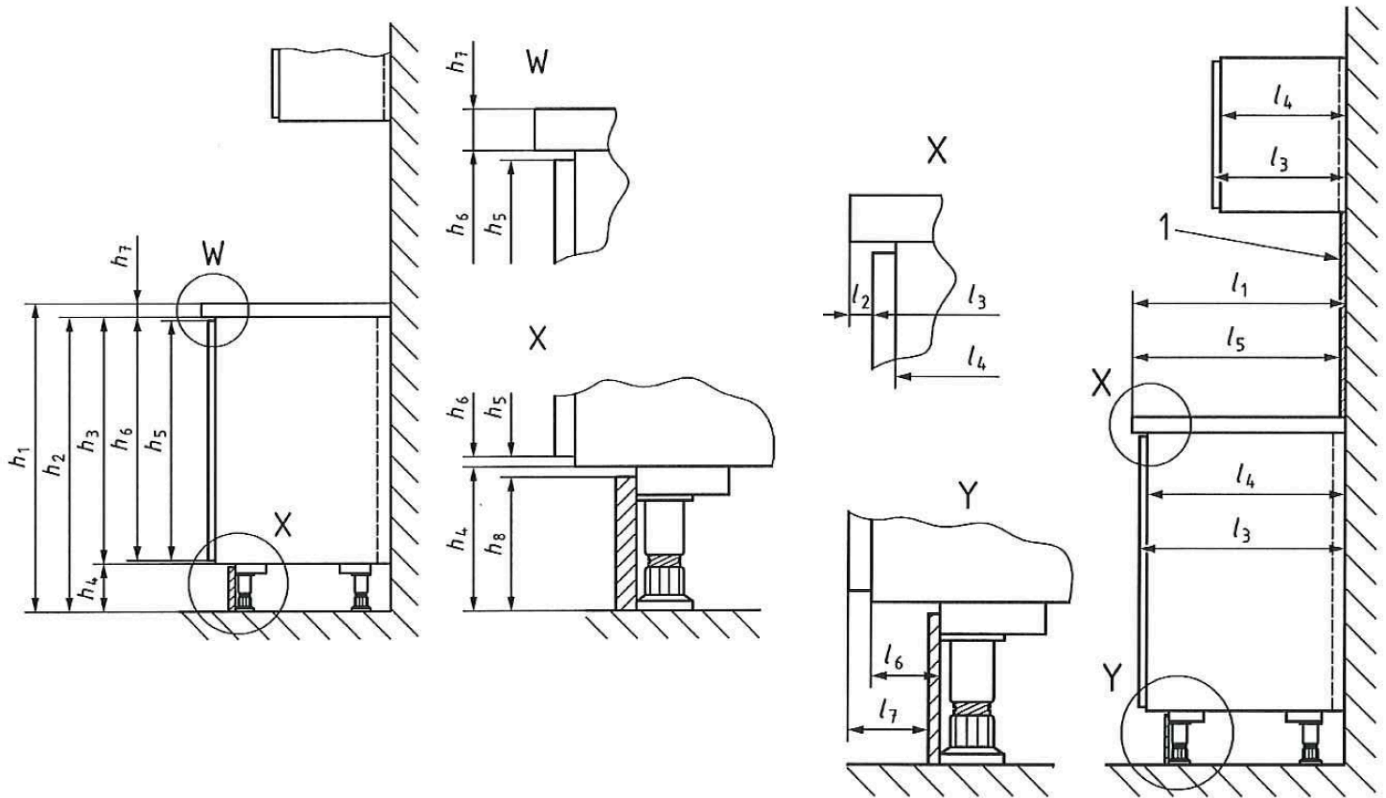
The three measures therefore make possible to adapt them to the intended user population.

Obviously this dimensional requirement does not apply if the workplan is height adjustable by the user.

Similarly, even the people with disabilities may need different dimensions from these.

# UNI EN T116:2018 Coordinating sizes for kitchen furniture and kitchen appliances

Andrea Giavon



As a consequence of the height values of the worktop, the height of the recess for built-in appliance must be:  
 min. 820 mm  
 min. 870 mm  
 min. 920 mm  
 Alternatively, the adjustable solution can be used.

The standard also defines the distance between the cooking plate and the extractor hood without giving a reference value but postponing the value to the producers of the cooking plate and the extractor hood.

Wide and articulated the table that define the heights of the openings for the housing of household appliances (eg dishwashers, ovens, refrigerators etc.) according to the possible nominal widths (400, 500, 600 and 900) of the furniture (bases). The possibilities are many with a distinction between favourite dimensions (in the first and second bars) and not recommended.

As for the heights, worthy of note is the minimum value between the work surface and the wall unit ( external side of the bottom) which is 450 mm.

As in previous versions, the standard gives a minimum value of 80 mm for the height of the baseboard base. This value is to safeguard cleaning operations, while in the case of vertical mobile bases, refer to the safety standard EN 14749:2016 (minimum 100 mm).

# UNI EN 116:2018 Coordinating sizes for kitchen furniture and kitchen appliances

Andrea Giavon

Also the depths of the worktops are the subject of recommended numerical values (minimum 600 mm) that are related to the depth of the appliances. It is also interesting to note that for the wall unit both a minimum (310 mm) and a maximum (400 mm) depth are contemplated. The minimum value to allow usability (dishes etc.) the maximum value (in relation to the depth of 600 mm) for reasons of steric encumbrance and accessibility by the user.

Finally, the widths of the recesses for the housing of the household appliances also have dimensional requirements. These requirements are different and illustrated in two different tables according to the different cases:

- Built-in appliances with equal width to the external nominal dimension of the furniture (base);
- Built-in appliances with equal width to the internal dimension of the furniture (base).

In the first case the nominal widths of recesses provided are 450 and 600 mm (corresponding to the two models of built-in appliances, the second most frequent).

In the second case the expected values of the nominal width of the furniture are instead 400, 500, 600 and 900 mm. In this case the minimum width of the recess is obviously smaller as it must take into account the two sides of the piece of furniture. The standard also draws attention to the space required for housing the hardware.

I hope I have succeeded in illustrating the standard and focusing the various interesting aspects it contains. However I strongly suggest a patient and careful reading.

The interlocutor of this standard is the manufacturer of kitchens but also those companies, different from the giants of household appliances, who with shining and innovative ideas are moving into the world of consumer products proposing more and more *consumer-friendly* solutions.

June 2018

## For info:

Andrea Giavon

+39 0432 747230

giavon@catas.com